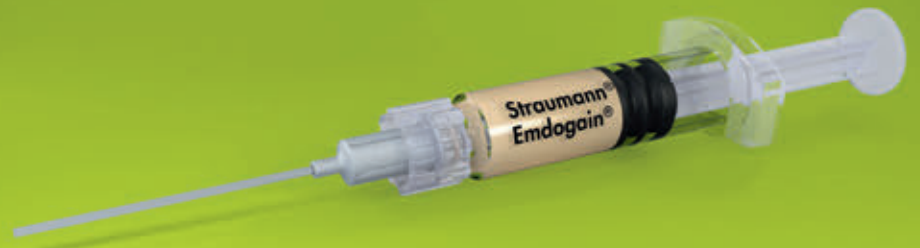




Biomaterials@Straumann®
Because one option is not enough.

Straumann® Emdogain®

ENAMEL MATRIX DERIVATIVE



Straumann® Emdogain®

« Emdogain® is a unique protein mix which influences a number of different cells and different processes. It really helps the wound healing and wound closure in the oral cavity. »



Prof. Dr. David Cochran,
Implantologist,
San Antonio/USA

WHY USE STRAUMANN® EMDOGAIN®?

Emdogain® induces true regeneration	By modulating the wound healing process, Emdogain® induces the regeneration of a functional attachment in periodontal procedures (as evidenced by human histological data ^{1,2})
Emdogain® improves wound healing in oral surgical procedures	By promoting angiogenesis ^{3,4} , modulating the production of factors related to inflammation ⁵ and thanks to its anti-microbial effect toward oral pathogens ⁶ , Emdogain® accelerates the wound healing process of oral surgical procedures ⁷
Emdogain® increased the predictability of your periodontal procedures	Emdogain® leads to: - significantly improved clinical parameters in intra-osseous defects compared to open flap debridement procedures alone ⁸ - increased root coverage achieved when used in a coronally advanced flap (CAF) compared to CAF alone ⁹ , and leads to results comparable to CAF + Connective Tissue Graft ¹⁰
Emdogain® helps you achieve patient satisfaction	- When used to treat intra-osseous defects, Emdogain® contributes to improve your patients' dental prognosis. - When used in oral surgical procedures in general, Emdogain® accelerates wound closure ¹¹ , and reduces post surgical pain and swelling ¹² . - When used in periodontal plastic procedures around teeth and implants, Emdogain® may improve the esthetics of the results thanks to improved wound healing.
Emdogain® is easy to apply	Because Emdogain® is a gel, it requires no trimming and is easy to apply, even in defects difficult to access.
Emdogain® means peace of mind	Emdogain® is backed by extensive and long term clinical documentation. It is documented in over 1000 scientific publications including 600 clinical publications ¹³ and 10 year data ^{10,14} .

APPLICATION / HANDLING

Refer to the instructions for use available at ifu.straumann.com



Visit our internet site to discover more about the unique healing qualities of Emdogain:
Straumann® Emdogain®

PROPERTIES

Origin	Porcine unerupted tooth buds
Composition	Enamel matrix derivative, Propylene Glycol Alginate (PGA), water
Structure	Ready to use gel
Storage temperature	Cool storage in fridge (2°C – 8°C)
Shelf life	2 years

INDICATIONS

Emdogain® is best suited for periodontology, implantology and oral surgery:

- Intrabony defects
- Gingival recessions
- Class II furcations
- Oral wound healing
- Extraction sockets

Emdogain® in oral regeneration

Periodontitis is associated with a loss of tooth-supporting tissues which is irreversible and the main reason for tooth loss if left untreated. Emdogain® is the golden standard when it comes to inducing the regeneration of lost periodontal tissues in a safe, easy and predictable way. Long-term clinical studies have demonstrated that Emdogain® can effectively help save teeth and revert gingival recessions.

Emdogain® in wound healing

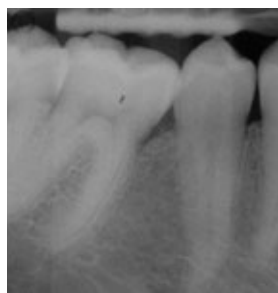
As esthetics, comfort and efficiency become more and more important when it comes to implant dentistry, Emdogain® is the solution you have been searching for. Emdogain® allows accelerated healing, minimizing discomfort for your patients through less swelling pain, and faster recovery. Further it will initiate a natural recovery that leads to esthetic outcomes.

TREATMENT

Courtesy of Prof. Carlos Nemcovsky



Before treatment with Straumann® Emdogain®



20 years after treatment with Straumann® Emdogain®

Courtesy of Prof. Giovanni Zucchelli



Before treatment with Straumann® Emdogain®



8 months after treatment with Straumann® Emdogain®

Available in the following sizes

Product	Code
Emdogain® Singlepack	
1 x Straumann® Emdogain® 0.15 ml	075.127W
1 x Straumann® Emdogain® 0.3 ml	075.101W
1 x Straumann® Emdogain® 0.7 ml	075.102W
Emdogain® Multipack	
3 x Straumann® Emdogain® 0.3 ml 3 x Straumann® PrefGel® 0.6 ml	075.114W
3 x Straumann® Emdogain® 0.7 ml 3 x Straumann® PrefGel® 0.6 ml	075.116W
Emdogain® 5-Pack	
5 x Straumann® Emdogain® 0.15 ml	075.098W
PrefGel®	
5 x Straumann® PrefGel® 0.6 ml	075.203W

REFERENCES

- 1 McGuire MK, et al. A Prospective, Cased-Controlled Study Evaluating the use of Enamel Matrix Derivative on Human Buccal Recession Defects: A Human Histologic Examination. *J Periodontol.* 2016 Feb 1:1-34.
- 2 Sculean A, et al. Clinical and histologic evaluation of human intrabony defects treated with an enamel matrix protein derivative (Emdogain). *Int J Periodontics Restorative Dent.* 2000;20:374–381.
- 3 Aspriello SD, et al. Effects of enamel matrix derivative on vascular endothelial growth factor expression and microvessel density in gingival tissues of periodontal pocket: a comparative study. *J Periodontol.* 2011 Apr;82(4):606-12.
- 4 Guimarães et al. Microvessel Density Evaluation of the Effect of Enamel Matrix Derivative on Soft Tissue After Implant Placement: A Preliminary Study. *Int J Periodontics Restorative Dent.* 2015 Sep-Oct;35(5):733-8.
- 5 Sato et al. Enamel matrix derivative exhibits anti-inflammatory properties in monocytes *J Periodontol.* Mar 2008;79(3):535-40
- 6 Arweiler et al. Antibacterial effect of an enamel matrix protein derivative on in vivo dental biofilm vitality. *Clin Oral Investig.* 2002 Dec;6(4):205-9. Epub 2002 Nov 14.
- 7 Maymon-Gil T, et al. Emdogain Promotes Healing of a Surgical Wound in the Rat Oral Mucosa. *J. Periodontol.* 2016 Jan 16:1-16.
- 8 Tonetti et al. Enamel matrix proteins in the regenerative therapy of deep intrabony defects – A multicenter, randomized, controlled clinical trial. *J Clin Periodontology* 2002;29;317-325
- 9 Tonetti MS et al. Clinical efficacy of periodontal plastic surgery procedures: consensus report of Group 2 of the 10th European Workshop on Periodontology. *J Clin Periodontol.* 2014 Apr;41 Suppl 15:S36-43
- 10 McGuire MK, et al. Evaluation of human recession defects treated with coronally advanced flaps and either enamel matrix derivative or connective tissue: comparison of clinical parameters at 10 years. *J Periodontol.* 2012 Nov;83(11):1353-62
- 11 Villa O et al. *J Periodontol.* A Proline-Rich Peptide Mimic Effects of EMD in Rat Oral Mucosal Incisional Wound Healing. 2015 Dec;86(12):1386-95.
- 12 Jepsen S, et al. A randomized clinical trial comparing enamel matrix derivative and membrane treatment of buccal Class II furcation involvement in mandibular molars. Part I: Study design and results for primary outcomes. *J Periodontol.* 2004 Aug;75(8):1150-60.
- 13 according to PUBMED search for “Emdogain” OR “enamel matrix derivative”
- 14 Sculean A, et al. Ten-year results following treatment of intra-bony defects with enamel matrix proteins and guided tissue regeneration. *J Clin Periodontol.* 2008 Sep;35(9):817-24



Visit our internet site to discover more about the unique healing qualities of Emdogain:
Straumann® Emdogain®

International Headquarters

Institut Straumann AG
Peter Merian-Weg 12
CH-4002 Basel, Switzerland
Phone +41 (0)61 965 11 11
Fax +41 (0)61 965 11 01
www.straumann.com

© Institut Straumann AG, 2017. All rights reserved.

Straumann® and/or other trademarks and logos from Straumann® mentioned herein are the trademarks or registered trademarks of Straumann Holding AG and/or its affiliates.