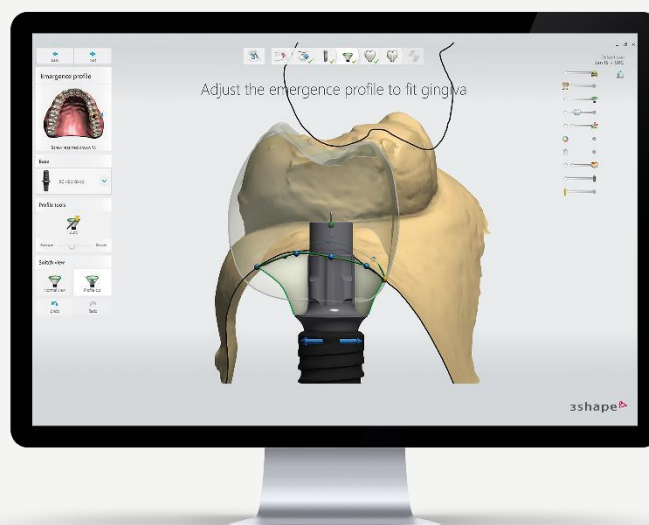


# 3Shape Implant Studio

## Frequently Asked Questions

### Contents

1. [3Shape Implant Studio introduction](#)
2. [Implant Systems](#)
3. [Installation and setup](#)
4. [In-house production](#)
5. [Edentulous cases](#)
6. [Useful references](#)



# 1. 3Shape Implant Studio introduction

## What is Implant Studio?

3Shape Implant Studio software enables you to create a predictable and consistent workflow for your implant procedures. From prosthetic driven implant planning to designing and producing your surgical guides and screw-retained crown in-house, Implant Studio means a better way to work for you and your team. Combine CBCT scans and intraoral scans in Implant Studio to get full clinical insight of the bone and soft-tissue situation, so you can diagnose and plan implant treatments consistently and predictably. Design and manufacture screw-retained crown based on your implant planning for immediate placement.

### 5 key selling points:

- Prosthetic driven implant planning enabling a more predictable workflow and better outcomes for patients
- Design cost-efficient customized surgical guides and perform guided surgery every time
- Offer same-day implant dentistry with guided implant and immediately placed screw-retained crown
- With open integrations, you are never limited to a certain workflow or manufacturer
- Strong connection to dental labs with access to all implant restoration types and materials

## Which versions of Implant Studio are available?

### Implant Planner

Plan your prosthetic driven implant procedures with the Implant Planner software based on esthetics, intended final restoration, available bone and the overall clinical situation to deliver increased treatment predictability and a better outcome. Addressing mainly clinics interested in the option to send this data to a lab. The lab then designs and produces the surgical guide and restorative components like provisional crowns and customized abutments.

### Implant Studio

The Implant Studio software includes all features in the Implant Planner plus the ability to design custom surgical guides and provisional screw-retained crowns\* based on the implant planning. Link to selected 3D printers for in-house production or send-to external partners for production. The Studio version is aimed at dental laboratories, but also at clinics and dentists, who want to be in control of the workflow. Each version is available in different packages that require subscriptions. Please see the 3Shape TRIOS Product Catalog for more information.

## What is the price range for Implant Studio?

Starting from a recommended end-user price around €1,000 for the Planner version up to €4,500 for the Studio solution when purchased as an add-on to TRIOS and Dental System Premium. Yearly subscription fees start from €150 up to €400. Please contact your reseller for stand-alone pricing.

## Is Implant Studio available in my country?

Implant Studio is approved for use in\*:

Argentina	Columbia	Iran	Morocco	Saudi Arabia	UAE
Australia	Costa Rica	Israel	New Zealand	South Korea	Uruguay
Brazil	Egypt	Jordan	Paraguay	Sri Lanka	USA
Bolivia	Europe + EFTA	Kuwait	Philippines	Taiwan	Venezuela
Canada	Hong Kong	Lebanon	Singapore	Thailand	Vietnam
Chile	India	Mexico	South Africa	Turkey	

\*Specific versions apply. Screw-retained crowns are not available in all areas. Please contact your reseller for the current status and list.

## Which implant treatments does Implant Studio support?

Implant Studio supports a full range of implant treatments: single- or multi-implant cases with teeth supported guides, immediate loading and edentulous cases with mucosa-supported guides.

## Can I do edentulous cases in Implant Studio?

Yes, Implant Studio supports the dual scan protocol.

## Can I design and produce screw-retained crowns in Implant Studio?

Yes, Implant Studio 2019 now offers design of screw-retained crowns in the same workflow after implant planning and guide design. Meaning that you can design the restoration based on the implant position that you plan for. This is not offered with any other products in the market.

## Is Implant Studio an open system? And what does it mean that the system is open?

Yes, it is an open system, so you can import any STL and DICOM file from different scanners, not just TRIOS or X1. Please see the DICOM compatibility document for specific questions.

## Is Implant Studio available with CAD points?

No, not currently.

## Does it work with my lab system?

Yes, Implant Studio has full integration with 3Shape Dental System for the design of customized abutments, provisionals and final crowns/bridges as well as implant bars.

## 2. Implant systems

### Which implant systems are available in Implant Studio?

More than 90 different systems including Straumann, Nobel, Dentsply, Zimmer Biomet, BioHorizons and Camlog. Further on, 3<sup>rd</sup> party sleeve manufacturers like Steco, NT-trading and ROE Dental are available. Please see the document [Implant and sleeve libraries for 3Shape Implant Studio](#) for more information.

### What Ti-bases are available for screw-retained crowns in Implant Studio?

Implant Studio 2019 will be launched with Ti-base libraries that have been verified by 3Shape. Currently available for the top implant manufacturers, but more will become available in the future. It will also be possible for users to import other libraries.

### Where can I find detailed drill instructions?

You can find detailed drill instructions in the final approval step and in your output folder. It will be generated automatically, when you save an order and generate STL output. Please note that the detailed drill instructions are currently only available for certain manufacturers – please see the document [Implant and sleeve libraries for 3Shape Implant Studio](#) for more information. More manufacturers are added continuously.

### Do you include original drill instructions in Implant Studio?

Yes, currently Bego, Biomet, BioHorizons and Straumann original drill instructions are included in the drill protocols – more will be added over time.

### Where can I get sleeves/anchor pins?

Please see the document “Implant and sleeve libraries in Implant Studio” (Steco, NT-trading and more). Anchor pins are found in the implant libraries for those companies that produce anchor pins, e.g. BioHorizons, Glidewell, Nobel Biocare, Avinent. To purchase these items, please contact the manufacturers or your reseller.

## 3. Installation and setup

### How can I install Implant Studio, if I am a new user?

Download and run the installer and you will get Implant Studio installed automatically, if your dongle configuration allows for it based on the registration status in your country. If Implant Studio is not registered in your country, it will not be installed.

### Do I need to download implant libraries after I install Implant Studio?

Yes, it is important to download implant libraries, before you create a case. Go to More > Settings > Implant Studio > Implant library to see and download available libraries in Implant Studio or see how in the User Manual (Chapter 4.2).

### Can I upgrade from older versions of Implant Studio to the newest version?

Yes, from Implant Studio 2016 and newer versions, you can upgrade to the newest Implant Studio version, if your dongle configuration allows for it based on the registration status in your country.

Click More > Settings > General > Subscriptions > Check for upgrades. An upgrade will be suggested to you and installed automatically when you click Install.

### Can I upgrade from Implant Studio 2014 to the newest Implant Studio version?

If you are using Implant Studio 2014, you have to install later versions of Implant Studio as a new user. You cannot upgrade from inside Implant Studio 2014.

### Which modules are included in Implant Studio?

Since 2017, Implant Studio include these modules: CT Preparation, Implant Studio, CAMExport (Save), CAM and Anatomy Design. In Implant Studio 2019, a new Abutment Design module\* is added. This will, on top of the capabilities of the previous Implant Studio versions, allow the user to design screw-retained crowns in the same workflow.

\*Not available in all markets at launch.

### What is the Abutment Design module? Does it have an extra fee?

The Abutment Design module is part of the Implant Studio workflow, the same as other modules. It does not require any fee. It is installed together with Implant Studio 2019 and newer.

## What is the CAM module? Does it have an extra fee?

The CAM module is part of the Implant Studio 2017.2 release and newer versions. It does not require any fee. It is installed together with Implant Studio 2017.2 and newer versions. To enable the functionality, the CAM server and relevant machine(s) need to be installed from the CAM settings page (Settings > CAM > General settings).

## How can I back up my cases in Implant Studio?

In Implant Studio 2017 and newer versions, you can easily back up your cases using a Backup and Restore function by Case Management. Click More > Settings > General > Backup and Restore.

## Can TRIOS Design Studio and Implant Studio be used on the same version of Case Management?

Yes, TRIOS Design Studio and Implant Studio can work on the same version of Dental Desktop.

## Does Implant Studio work as a “client-server” installation?

Yes, using Implant Studio 15.2 or newer, it is possible to install Implant Studio in a client-server setup.

## Does a “client” require a dongle during the installation?

No, only a “server” PC should have a dongle with an active Implant Studio license and client points enabled.

## Can I import cases from older Implant Studio versions into the newest Implant Studio version and vice versa?

You can use the Import/Export function and import a 3oxz file into the latest Implant Studio version from older software versions. However, you will not be able to open orders from newer Implant Studio versions in older Implant Studio versions.

## How can I send/receive orders in Implant Studio?

You can send/receive cases using 3Shape Communicate. Please see the User Manual (Chapter 4.2) for more information. Bear in mind that CT/(CB)CT data is not transferred via 3Shape Communicate. However, you can still see the implant positions and continue guide or prosthetics design in the 3Shape software when the order is received.

## 4. In-house production

### Can I do in-house production of surgical guides as well as of screw-retained crowns?

Yes, in Implant Studio 2019 we offer a full in-house production of surgical guides and screw-retained crowns in the same workflow. You can design and print surgical guides in-house with any Implant Studio version. We offer direct integration and optimized settings for many 3D printers. In Implant Studio 2019, you can also get an open output of a screw-retained crown for your in-house manufacturing by either printing or milling.

### Which 3D printers are available in Implant Studio for in-house production of the surgical guide?

Formlabs Form2 printer is initially available with full integration, meaning you can click Produce from inside Implant Studio (since version 2017-2), which will send the case and start the printer software automatically. More printers with direct integration will be added over time.

Many more printers are included with optimized settings from the 3D printer manufacturer, meaning you can choose them in Implant Studio, export the case and when importing the case to the printer software, you will not have to change the guide settings before printing.

### How can I install a printer?

Please check the step-by-step installation guides available from within the application under *More > Settings > CAM > General* (available since Implant Studio 2017-2).

### How do I produce the screw-retained crown I have designed in Implant Studio 2019?

The screw-retained crown file will be outputted at the Save step in STL format and stored in the same output folder, where the surgical guide is for production in your preferred printing or milling machine.

## 5. Edentulous case

### What types of scans do I import for an edentulous case?

As Implant Studio uses the dual CT-scan protocol, you should import 2 (CB)CT scans. For more details, please see the Implant Studio User Manual (Chapter 4.2).

### How do I prepare the data for an edentulous case?

See our recommendations in the document “How to successfully apply the dual CT-scan protocol” or check out our videos and webinars on [YouTube](#).

### Can I use a surface scan for planning an edentulous case?

No, Implant Studio uses the dual CT-scan protocol, so you should import 2 (CB)CT scans when using this workflow. One CT-scan should be of an existing denture/appliance and the other CT-scan should be of the patient wearing the denture.

### Does the shape of the radiopaque markers matter?

Yes, we recommend using sphere markers.

### Can I continue the design of prosthetics in Dental System for an edentulous case?

Yes, this is possible by exporting the gingiva scan with the implant information and importing this scan into Dental System. See how to do this in the video [3Shape Implant Studio - Prosthetics Design for Edentulous Cases](#).



## 6. Useful references

[Implant and Sleeve Libraries for 3Shape Implant Studio](#)

[Implant Studio Training Videos](#)

[Implant Studio DICOM Conformance Statement](#)

[3Shape Implant Studio - Prosthetics Design for Edentulous Cases](#)